

The Reno Reader

SERVING THE RESIDENTS OF THE RM OF RENO SINCE 1986

PUBLISHED BY CONSUL MUSEUM INCORPORATED



Canadian Natural

Proud to Sponsor the Consul Museum



306-299-2002

Jill Parsonage – Consul Branch Supervisor

Eve ■ Debra ■ Sherri ■ Denise

306-662-2617
1-877-662-2617

www.cypressmotors.com



Also see us for your cell phone needs.



SOUTHLINE

Oilfield Construction & Maintenance

Full Service Shop
Automotive & Farm Tires
& Hydraulic Needs



306-299-4903 Consul

While staying at the

SOUTH COUNTRY INN

306-299-5666

ENJOY A SOFT ICE CREAM AND FRIENDLY ATMOSPHERE AT

WARLIN ICE CREAM

306-299-4556

YOUR SGI AUTO LICENSING OFFICE



CONSUL GROCERY

STORE

306-299-2011

Raymond Olmsted

Manager

Weekdays: 9:00-6:00

CONSUL FARM SUPPLY
306-299-2022

Scott Amundson - Manager
Weekdays: 8-5:30



MEMBER OWNED

RENO 4-H REPORT

- by Zane Tully



The Reno 4-H Beef Club held Weigh Day on December 6 at the Reynolds farm. We weighed 24 steers and 5 heifers. The weather was great and everyone had fun.

District 4-H curling was cancelled due to not enough interest so instead we held a fun spiel for anyone who wanted to come from all the clubs. Almost our whole club attended and a few members from the other clubs made it out. It turned out to be a fun-filled day for everyone.

The club held a food sale at Consul School in November which raised approximately \$200.00. The members helped serve the spaghetti and meat sauce meal.

Keep the dates open on February 7th to come out and hear our club speeches which will be held at Consul School at 1:30, and our Achievement Day which will be held on May 28th.

SCHOOL COMMUNITY COUNCIL REPORT

The Consul School Community Council (SCC) would like to say thank you to all the parents and community members for their generous support of our "Store of Giving" project at Christmas time, from which we were able to donate \$145.75 to the Salvation Army.

We also want to thank all of the families and local businesses for the support of our Hot Lunch Program. The proceeds are going towards supporting our school sports teams and many school projects.

Lightfoot Farms

Ira Blakley

James & Cara Blakley

Clint & Judy Brost

Smokin Joe's Trucking (Jody & Heather Newman)

Shawn & Jill Mackie

We are seeing almost 100% participation for all the meals we are offering and hope to continue for the remainder of the year.

We still have meals open for sponsorship, so if your family or business would be interested, please contact the school to see how you can get involved!

Blythman Agencies Ltd.

Farm & Ranch Insurance
Hail Insurance Real Estate
Market Evaluations

Brad Blythman Keith Schmidt
John Scott Cale Blythman

306-662-2604 Fax: 306-662-4555
www.blythmanagencies.com

MAINLINE SALES & SERVICE

205 Harder Street, Maple Creek
306-662-2491

AMSOIL PRODUCTS & COMPLETE
AUTOMOTIVE SERVICE
SUPPLIER OF COOPER TIRES

ROGER LEWIS - Manager
ROB LOCKARD -Shop Foreman

MURRAY

Chevrolet Buick GMC
Maple Creek Ph: 306-662-2622
www.murraymaplecreek.ca

Welcome To
**COWTOWN
LIVESTOCK
EXCHANGE INC.**

306-662-2648
1-800-239-5933

**TYLER CRONKHITE
MANAGER**

Lifestyle Financial Services
Ltd.

Marilyn Blythman

Phone: 306-662-2678 101 Maple Street
Fax: 306-662-2679 PO Box 2050
Maple Creek, SK
S0N 1N0

Southwest Corral Cleaners

Consul
(306)
299-7681

COMING EVENTS

All are welcome to the second **Good Neighbour Talk** on **Saturday, January 16th** at 1:30 pm in the Consul Hall. Unfortunately, our guest speaker is unable to attend, so the agenda will include updating you on what is currently going on with Living Hope Ranch.

Come out to the Consul Rink for some exciting **SSHL Midget Hockey action!** The Maple Creek Hawks host the Shaunavon Badgers in Consul, **January 17, 2016 @ 6:00pm**. Come on out and cheer for our local boys! Maple Creek Hawks players this year are: Kelsey Howell, Brett Pridmore, Brandon Rabe, Tavis Buchanan and Darcy French.

Consul Ladies Bonspiel - January 26-30, 2016

3 events. \$100 entry fee. Banquet on Friday night.
Deadline to enter is January 21st. Phone Peggy @ 299-4477, Debra @ 299-4911 or Jean @ 299-4926.

There will be **Meals** and a **Beer Garden** at the Consul Hall on **January 30** in conjunction with the Ladies Bonspiel. Also a Roast Beef Supper from 5-7 pm. Adults \$12.95; 6 to 12 years \$6.50. Reservations before January 28 would be appreciated. Limit of 50 seats available. Call or text Connie @ 306-299-7234 or Barb @ 306-299-5693.

The Consul Curling Club will be holding their **Annual Open Bonspiel February 29 - March 5**. Entry fee is \$120. Enter teams with Dale or Doreen 306-299-5712. Entry deadline is February 25. Max limit of 16 teams.

**CONSUL ROCKETS GAMES**

Saturday, January 23rd @ Cabri 8:00

Friday, January 30th vs Leader 8:30

► Watch for posters for a home game vs Cabri TBA. ◀

BAKERY NEWS

Happy New Year Greetings!

We have adjusted some of our winter hours, until the rink closes. We are presently closing between 6:00-6:30 pm. We welcome Pizza orders, of course, and have had quite a bit of interest in the individual supper options. The Turkey Pot Pies and Lasagne have been a hit. Your suggestions are also welcome for more ideas for take-out supper options.

NOTICES

EASY COMPUTER HELP 311- 5th Avenue Maple Creek
 Ken Smallenberg (306) 662-3665
 Personalized Computer setups. Clean ups.
 Virus/spyware removal. Printer setups. Program setups.
 Lessons tailored to you.

For Sale - one new 3/4 HP 220 control box for pump. Didn't need, can't return it. \$100. 306 299 4445

For Sale—Willmar 7200 Ranger sprayer, Air ride with auto height control, 2492 hrs, 5.9 Cummins with about 300hrs on new injection pump and injectors, 18.4r38 and 12.4r42 tires, 600gal stainless steel tank, 80' boom, 3way nozzles with 5, 10 and 15gal tips, Midtech auto rate controller, Greentronics auto boom height control, Outback STS gps with Edrive auto steer and Automate boom section control, comes with spare wheel motor, spare tires and crop dividers. \$40,000 obo. Call 306-295-7552.

Jennifer Phair and Akeso Massage Therapy will be in Consul on **Tuesday, January 26th**, 10:45 am to 8:15 pm, and **Wednesday, January 27th**, 9:15 to 5:45 pm. Please note: As of January 1, 2016 my rates have increased to \$60 per treatment. Please call, email or fb to book a massage therapy appointment or if you have any questions.
 Jennifer Phair R.M.T.
 j.phair@sasktel.net
 306-778-2059 or 306-741-8026.


Southline Gas & Oilfield Services would like to take this opportunity to welcome Ira Blakley to our staff. Please call Southline or Ira @ 661-0192 for all your backhoe and skidsteer needs.

JANUARY 28 ISSUE

Thank you to Nancy-Jean Taylor for filling in at the editor's desk and typing up the next issue of *The Reno Reader* while Susan Pridmore is away. Your ads may still be emailed to the museum address: consulumuseum@gmail.com. If you wish to phone in an ad, please call Nancy-Jean at 306-299-4445. The deadline for ads and reports for that issue is noon on Monday, January 25th.



LIVE WELL WITH
PHARMASAVE
Maple Creek Pharmasave
 118 Jasper Street
 Phone: 306-662-3134
 After Hours: 306-661-7997
 Open Mon to Fri 9 am to 6 pm
 Sat 9 am to 5 pm

MOOSE'S
 OUTFITTING

118 Maple Ave. S.
Eastend, SK
306.295.7909
See us for all your hunting needs!
Licenses Guns
Ammo Calls Knives
Clothing Optics Accessories

SILVER
SAGE
CHEV
CHEVROLET
BUICK
GMC & CHEV
TRUCKS
 Parts ■ Sales ■ Service ■ Leasing
306-297-2772 Fax: 306-297-2224
 www.silversagechev.ca

Roger Thompson
BACKHOE
SERVICE

 Water/Sewer
 Excavating
 Gravel Hauling
Formerly Tom's Backhoe Service
306-299-2088 or **306-294-0004**

Schafer's Electric

For all your electrical needs
 Maple Creek 306-662-4251
 Cell: 306-662-7211 Justin: 306-662-7675

EM **HOMEGROWN**
STARK & MARSH **SUCCESS**
 CPA LLP
 Accounting services for personal, small, medium or large business, and agricultural producers.
 starkmarsh.com

C+D PURAIR LTD.

FOR ALL YOUR
FURNACE & DUCT CLEANING
FAST/RELIABLE SERVICE

COLIN ORR—306-662-3046
OR 306-330-9046

AIR CONDITIONING
INSTALLATION & REPAIR ALSO AVAILABLE



LANSDALL IDA PHARMACY LTD.

Phone: 306-662-2755

Box 250 Maple Creek, SK S0N 1N0

WALTER'S

HOME FURNISHINGS

Appliances - Household Furnishings
Electronics - Floor Coverings

Darcy Barkley 306 297 2141

Fax 306 297 3400 Res 306 297 3067
Box 238 Shaunavon, SK S0N 2M0
darcybarkley@gmail.com



Box 1147
Shaunavon
306-297-2656
Maple Creek
306-662-2733

EAGLE LAKE FEEDS



Are your cows
in their last trimester?
Now's the time.
Call Calvin Dahl for your
protein and mineral blocks.
306 662 8385

Maple Plumbing & Heating Ltd.

40 Pacific Avenue, Maple Creek, SK
Plumbing ■ Heating ■ Sheet Metal
Air Conditioning ■ Gas Conversions



Phone 306-662-2666 or
306-662-2477
Fax: 306-662-3022

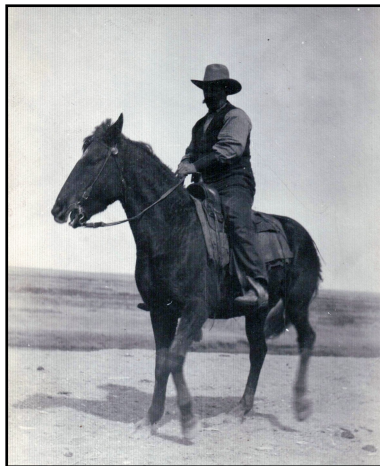
J. Andreas 306-662-7264 R. Andreas 306-662-7001

**DEADLINE FOR ADS
for the next issue is
Monday, January 25th
at noon.**

EARLY RANCH HISTORY

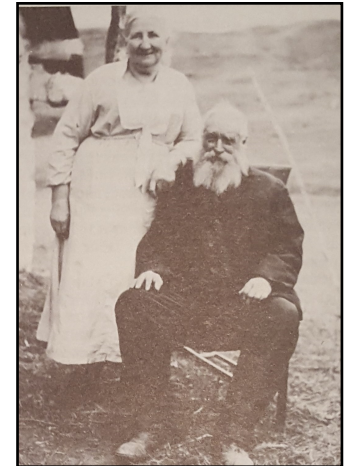
Consul Museum is now gathering information for the next section of our website—Early Ranchers. We will be showcasing the people who came to this area in the mid-1800s, before the homesteaders, and raised cattle, horses, sheep and other livestock in this area.

Can you help us out with any information? Maybe you have an excellent book on this topic. Maybe you have some pictures from way back then because your ancestors were part of that group. Maybe you just have names you can pass along to us because you know who owned the land that you now farm or ranch. Get in touch with one of the board members to pass along your info—Joan Parsonage, Ann Behrman, Jean Jones, Betty Stokke, Bill Reynolds, or Susan Pridmore. Thank you!



James McKinnon in 1922

The McKinnons started ranching in Cypress Hills in 1900 then relocated to the Consul-Vidora area in 1905. They raised cattle, sheep and mules along Battle Creek. Lawrence Schmidt is a great-grandson of James and Catherine McKinnon.



Betha & Everett Parsonage

came to the Cypress Hills in 1899. They established Roseburn Ranch four miles south of Fort Walsh on Battle Creek where they raised twelve children. Many of these children and their families—Parsonages, Guenthers, Spanglers, Pridmores—stayed in the area and continued the ranching way of life.

Reno Reader

Contact Information

Editor: Susan Pridmore

Invoicing: Jean Jones

Box I44, Consul, SK S0N 0P0

Phone or Fax to 306-299-4493

consulmuseum@gmail.com



consulmuseum
SASKATCHEWAN CANADA

Come visit us!
Open 7 days a week,
24 hours a day!
www.consulmuseum.ca